

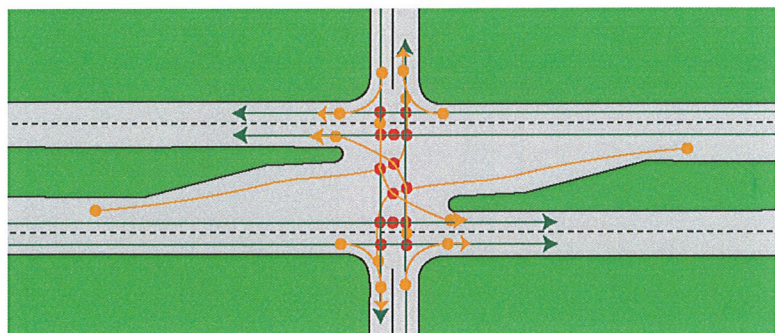
Reduced Conflict Intersections

Safer intersections on divided highways

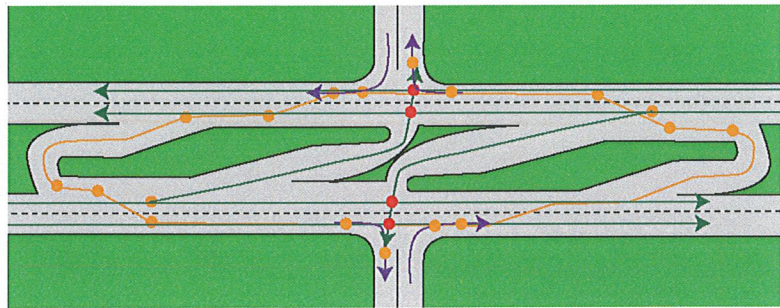
Reduced Conflict Intersections improve safety for you!

Standard intersections on divided highways have a great risk of fatal and serious injury right-angle crashes. From 2011-2015 more than 140 crashes resulted in one or more persons killed or seriously injured.

Reduced Conflict Intersections (also known as J-turns or RCUTS) are alternative intersections for four-lane divided highways. A Minnesota study show: 100% reduction of fatal and serious injury right angle crashes, 77% reduction of all severity right angle crashes, and 50% reduction of injury crashes.



42 total conflict points
● 24 crossing
● 18 merge/diverge



24 total conflict points
● 4 crossing
● 20 merge/diverge

Frequently Asked Questions

Why not install a traffic signal?

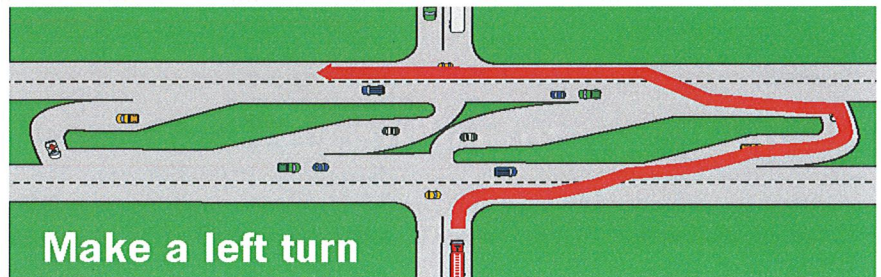
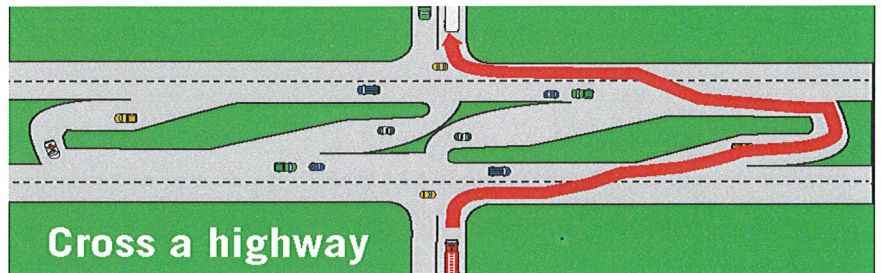
Previous studies show an increase in the number of crashes on high-speed rural intersections after the installation of traffic signals.


How will customers get to my business?

Customers traveling on the divided highway have no change in accessibility to the side streets. Right-turning traffic is unchanged. Left-turning traffic — make a U-turn at a designated location then turns right onto the desired side street.


How will this new intersection impact my travel time?

Most of the time, this type of intersection takes less time to cross than a standard signalized intersection. This is because you will only have to wait for one direction of traffic to clear. The total distance from the side road to the U turn point is typically less than one mile.





TOWARD ZERO DEATHS



Reduced Conflict Intersection

A safer more efficient alternative to traffic signals on divided highways!



For more information, please contact:

Derek Leuer

Derek.leuer@state.mn.us

651-234-7372

Or visit

<http://www.dot.state.mn.us/roadwork/rci/>

Video demonstration: <https://www.youtube.com/watch?v=c5pBnuu1Cno>

2017